

# UniSVR UniArgus® Express Server

## Network Application Server



**UniArgus Express Server (UES)** is a multifunctional networked server which contains video browsing, recording, device controlling and alarming functions. Its plug and play easy installation feature can significantly save time and effort in learning how to operate various independent systems. UniArgus Express Server is also a cost effective solution because users do not need to buy many single-purpose hardware and spend a lot of money to integrate them. UniArgus Express Server can also interact with various devices to provide diversified applications.

### Features

UniArgus Express Server contains all the feature of a standard NVR and it also has the following features :

- Easily use the PC camera (USB camera) like IP cam. Not only the construction cost is reduced remarkably; but also PC cameras can provide better mobility than the traditional surveillance cameras.
- Trouble free installation and internet setting, reduced effort and cost in learning how to use the surveillance system.
- Support 2 ways audio talk between server and camera
- Integration with uBox2, which supports more IO ports to link external digital sensor input and Digital output replays. It breaks the limitation of DI/DO port number which is constrained by IP cameras, and brings more flexibility on locations of devices.
- Support SMS alerting through Skype.

### Applications:

UniArgus Express Server is suitable for home, office and small or medium businesses. One UniArgus Express server is enough to cover the following functions:

#### Home security/ Property surveillance

UniArgus Express Server supports many popular IP camera models in the market. Users are free to choose the model or the brand best that suits the need. The system has 4 preset recording modes (24/7 continuous recording, 24/7 economic recording, office hour recording/none-office hour recording) to start up easily.

#### Long-hour sustained recording

In occasions like birthday party or family gathering, you can move the cameras temporarily to perform long-hour continuous recording or take snap shots from different viewpoints. Later, you may use 4-channel simultaneous playback to see videos you record from each viewpoints. You can also setup long-period recording to observe the process plant flowering or your pets giving birth.

#### Video intercom

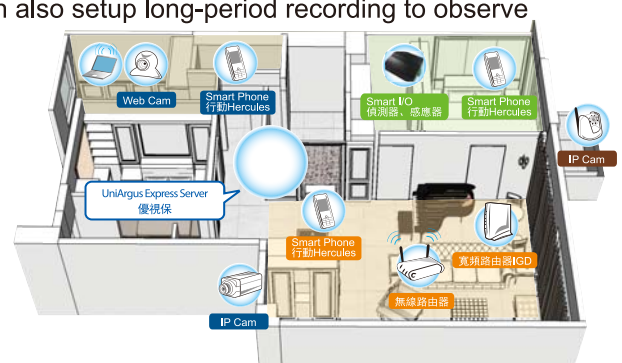
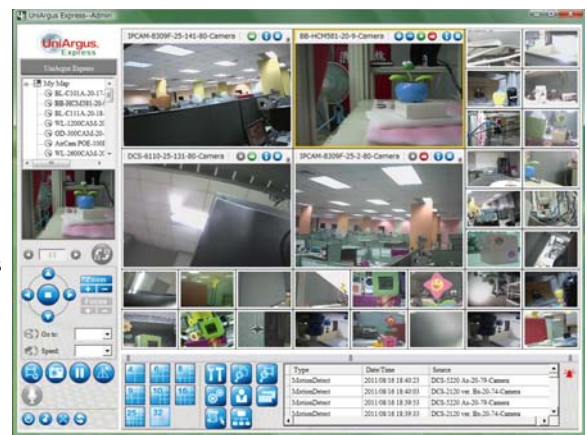
Enable the intercom between the visitor and host, video or audio recording is also available to help user keep important messages when you are away.

#### Remote monitoring

You can remote monitor the elder family member who is living on his own or the baby sitter who is looking after your kids. UES helps you to care what you concern.

#### Alarm management

Together with uBox2, UES can connect various kinds of sensors such as intruder sensors, reed switches, smoke detectors, and CO sensors. When an event occurs, the system can send emergency notice via SMS to you or someone who could help, such as community guards.



# Product specifications and Function

Audio/Video Input	Video devices	Up to 32 video channels	Multi-channel Playback	Playing mode	Play, pause, forward, backward, fast playback, etc.,
	Video System	NTSC / PAL		Fast Search	Tagging the motion to playback from any screenshot
	Image resolution	QCIF/CIF/4CIF/D1/VGA/Mega Pixel		Multi-Channels	Up to 4-channel simultaneous playback, either synchronous or asynchronous multi-channel playback
Monitoring	Audio	Show audio with video if input devices support, (see supported list for details)	OSD print	OSD print	camera name/date/time on snapshot to print snapshot with your remark together
	Image resolution	1024*768 / 1152*864 / 1280*1024 / 1280*768 / 1280*1080		Video Export	AVI format clipping for the most of video player
	Split screens	1 / 4 / 6 / 8 / 9 / 10 / 16 / 25 / 32		camera control (depend hardware)	Pan and Tilt
	Video selection	User intuitive tree-view structure	Preset point		Manual control or Auto-cruise between preset position
	Video grouping	set randomly and keep for next use automatically	Adjust Image		Contrast, hue, brightness, saturation
	Forwarding rate	A single camera can transmit up to 6,000 FPS CIF video if the bandwidth is sufficient	Lens control		Zoom in \ Zoom out \ Focus
	Snap shot	Real-time image browsing, screen snapshots can be taken anytime	Extended device	Relay switch	
VoIP Intercom	Built-in audio intercom function, can communicate with the devices via the system	System Management	Log and report	Admin and User operation, device or system failure.	
PC Cam support	Extend the function of USB Camera of PC to IP cam		Auto Search	Support automatic discovery of the devices on the same network segment to simplify setup process	
Compression	MJPEG/ MPEG4 / H.264		Data backup	Provides database backup of system settings, events log, recording files and related information	
Recording	Working mode	7x24, Scheduling, Event triggered, Manually	Remote setting	Remote setting	Support remote configuration of system, including network settings, restore factory settings, disk management and system reboot
	Saving mode	Compress record file to save hard disk space		Language	Traditional Chinese, Simplified Chinese, English and other(by order and request)
	Capacity	up to 8TB capacity hard drives *.2		I/O Connectors	Serial port
	Trigger mechanism	Time / Devices alarm / Servers and other network-based alarm signal to start the recording mechanism	Input port		Keyboard / Mouse
	Extend storage	Supports the connection to the iSCSI storage devices	Ethernet port		Support 10/100/1000Mbps *ps1
	Files access	By camera location / Event Type / Date& Time	USB Port		USB 3.0 * 2, USB 2.0 * 4
	Pre/post event recording	1-150 seconds (up to 30 seconds before the event, maximum 120 seconds after the event)	Hard Drive port		4 SATA II 3.5" Hard Driver space, hot-swappable
	Export/Import database	Provides database backup feature, which can also be operated remotely	VGA Output		VGA D-sub 15pin*1
	Video files export	Convert record video files to AVI format to use the most popular Media Player to play	Compatible devices		Web Cam
	Device management	drag and drop of cameras to assign location with the status on e-map, directly click the camera to view image, or double click to configure via web		IP Camera	AirLive \ AMTK \ Axis \ CTC Union \ D-Link \ IPUX \ Panasonic \ UniSVR \ Vivotek \ YOKO
Alarm function	System alarm	E-mAil Server; SMS offline; database/system overload; Video/Log writing error	Operating environment	Video Server	Axis \ IPUX \ Pixord \ YOKO
	Event Alarm	Sensors triggered, motion detection and third-party alarm system triggered event		IO Controller	UniSVR UBox2
	Device failure	devices disconnected / restore connection		Power supply	160W Power supply, Input 100 ~240VAC
	Notification	By e-Mail, SMS (via Skype)	Temperature	5°C~45°C	
Serial reaction mechanism	1.move PTZ camera to the preset viewpoint for the Real-time video monitoring, recording 2.Turn DO on or off to trigger external warning or block the disaster. 3.Sent a warning message by eMail or SMS (via Skype), or just play sound		Humidity	5%~95%	
			Dimension	200mm x 260mm x 218mm (W x L x H)	

## Hardware Specifications

I/O Connectors	Serial port	DB-9 *1
	Input port	Keyboard / Mouse
	Ethernet port	Support 10/100/1000Mbps *ps1
Compatible devices	USB Port	USB 3.0 * 2, USB 2.0 * 4
	Hard Drive port	4 SATA II 3.5" Hard Driver space, hot-swappable
Operating environment	VGA Output	VGA D-sub 15pin*1
	Web Cam	Web Cam with Hercules software
	IP Camera	AirLive \ AMTK \ Axis \ CTC Union \ D-Link \ IPUX \ Panasonic \ UniSVR \ Vivotek \ YOKO
	Video Server	Axis \ IPUX \ Pixord \ YOKO
	IO Controller	UniSVR UBox2
	Power supply	160W Power supply, Input 100 ~240VAC
	Temperature	5°C~45°C
	Humidity	5%~95%
	Dimension	200mm x 260mm x 218mm (W x L x H)

## Ordering information

Product ID	Product Model	Product Description
UES-3W110D02-49	UES-3D0249W	UniArgus Express Server includes UMA,WIN7, RAID

