



DLF1268 / DLH1268

12.1" TFT LCD, LED Backlight 1600nits,XGA(1024x768)

12.1" TFT LCD panel, built-in 1600 nits high bright for sunlight readable LCD display, high transmittance color filter, high transmission polarizing plates, Low Power Consumption, suitable for automation, marine, transportation , gas pump.

Key Features

- Sunlight Readable
- LED Backlight
- XGA(1024x768) High Definition
- High Shock & Vibration Resistance
- Wide operation Temperature
- Low Power Consumption
- High Uniformity
- Low EMI Noise
- Wide Dimming
- Life Expectancy



Specifications

V1

Model No.	DLF1268	DLH1268
Description	12.1" TFT LCD, LED Backlight 1600nits,XGA(1024x768)	
Display Area (mm)	245.76(H) x 184.32(V) mm	
Brightness	1600 cd/m ²	
Resolution	1024x768 (XGA)	
Contrast Ratio	700 : 1	
Pixel Pitch (mm)	0.24(H) x 0.24(V)	
Viewing Angle	+80°~-80°(H), +80°~-80°(V)	
Display Colors	262K/16.2M	
Response Time (Typical)	35ms	
Power Consumption	11.3W	
Dimensions (mm)	272x204.6x12.5mm	
Weight (Net)	0.5kg	
LED Driving Board	LID12	
Control Board (Optional)	<input type="checkbox"/> AD5621GA <input type="checkbox"/> AD5621GD <input type="checkbox"/> AD5766GDVA <input type="checkbox"/> AD2662GDVAR	
<input type="checkbox"/> AD5621GA	VGA+Audio	
<input type="checkbox"/> AD5621GD	VGA+DVI	
<input type="checkbox"/> AD5766GDVA	VGA+CVBS+S-Video+Audio (Optional DVI)	
<input type="checkbox"/> AD2662GDVAR	VGA+DVI (Optional CVBS/S-Video/ Component / Audio)	
F / R Control Button	<input type="checkbox"/> 5 Key <input type="checkbox"/> 4 Key	
<input type="checkbox"/> 5 Key	Power Switch, Menu, Select (+,-), Auto	
<input type="checkbox"/> 4 Key	Power Switch, Menu, Select (+,-),	
OSD Menu	Brightness, Contrast, H/V Position, Color, Phase, Clock...	
Optional	<input type="checkbox"/> AOT <input type="checkbox"/> Touch Screen	

Specifications are subject to change without notice.

All brands or product names are trademarks or registered trademarks of their respective companies.

DLF= Panel+LED Driving Board

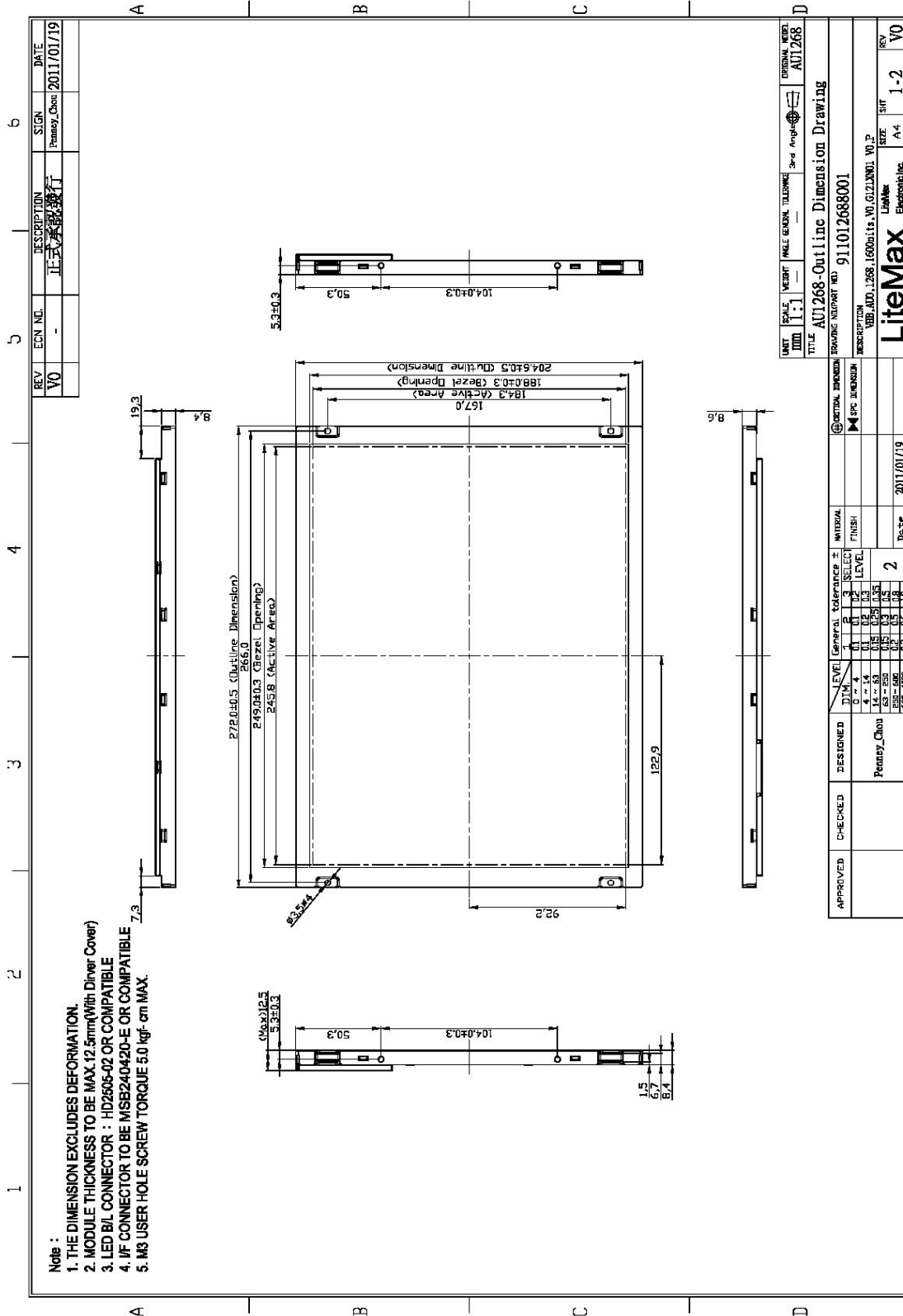
DLH= Panel+LED Driving Board+Control Board

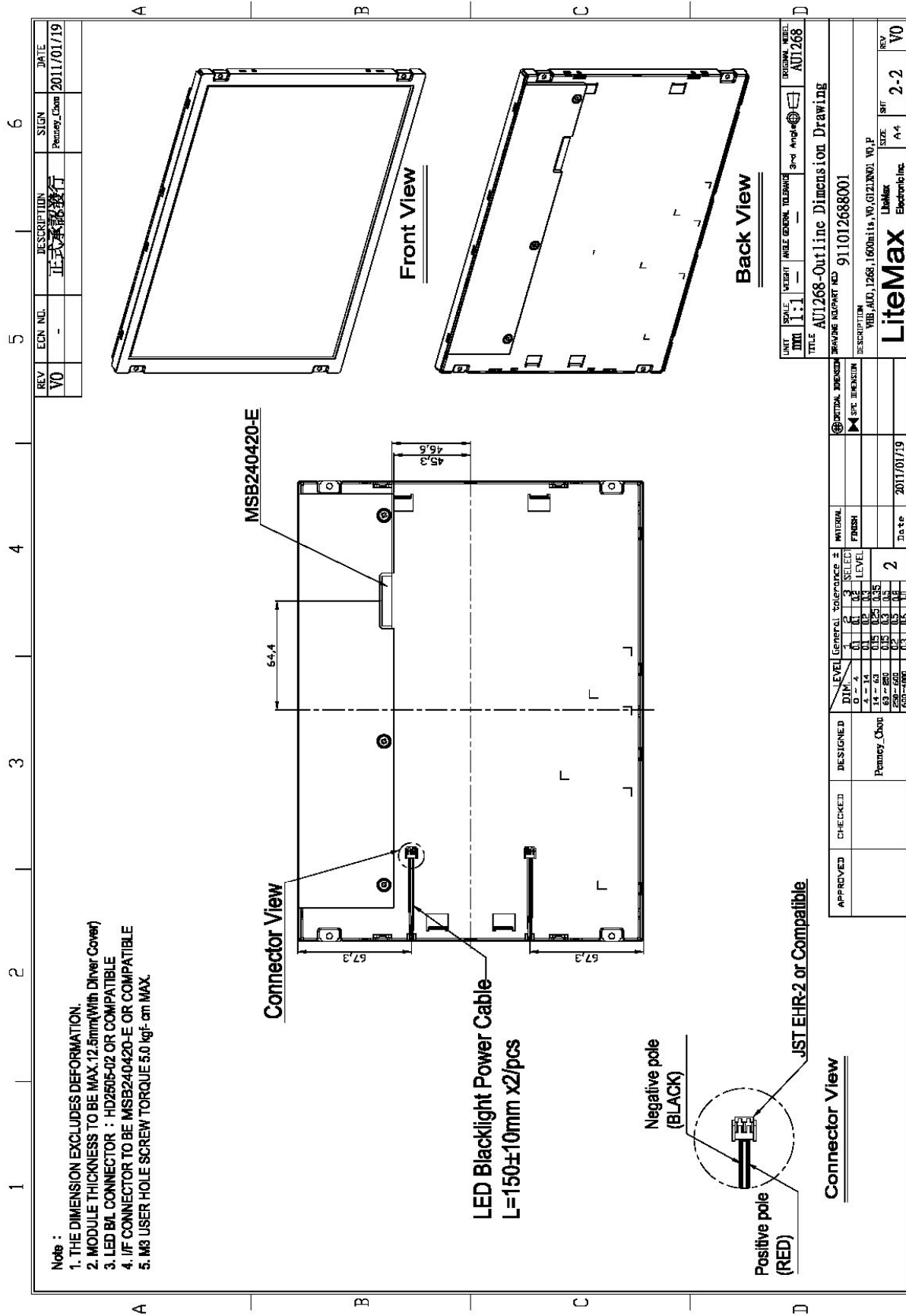


Mechanical Drawing

Outline Dimensions

Unit:mm





REV	EDN NDL	DESCRIPTION	SGN	DATE
V0	-	正式承認發行	Penney_Chen	2011/01/19

UNIT	SCALE	UNIT	FILE	GENERAL	TELEPHONE	3rd Angle	DESIGNAL NBR												
MM	1:1	-	-	-	-	-	AU1268												
TITLE AU1268-Outline Dimension Drawing																			
DRAWING SUPPORT FILE 911012688001																			
DESCRIPTION																			
V0, A0, 1268, 1600bits, V0, 0121, INCL, V0, P																			
<table border="1"> <tr> <td>Company</td> <td>LinkMax</td> <td>Size</td> <td>A4</td> </tr> <tr> <td>Product</td> <td>Electronic</td> <td>Rev</td> <td>2-2</td> </tr> <tr> <td>Version</td> <td>V0</td> <td>Sheet</td> <td>V0</td> </tr> </table>								Company	LinkMax	Size	A4	Product	Electronic	Rev	2-2	Version	V0	Sheet	V0
Company	LinkMax	Size	A4																
Product	Electronic	Rev	2-2																
Version	V0	Sheet	V0																

APPROVED	CHECKED	DESIGNED	LEVEL	General	Subpractice	INTERNAL	DATE
		Penney_Chen	2	0.1	0.2	0.3	2011/01/19
			LEVEL	0.1	0.2	0.3	
			LEVEL	0.1	0.2	0.3	
			LEVEL	0.1	0.2	0.3	
			LEVEL	0.1	0.2	0.3	
			LEVEL	0.1	0.2	0.3	
			LEVEL	0.1	0.2	0.3	
			LEVEL	0.1	0.2	0.3	
			LEVEL	0.1	0.2	0.3	

A4 297x210mm



Ordering Information

Part Number	Description
DLF1268-ENN-A01	12.1",1600nits,XGA,LID12,V01
DLH1268-ENN-A01	12.1",1600nits,XGA,LID12,AD5621G,V01
DLH1268-ENN-C01	12.1",1600nits,XGA,LID12,AD5766GDVA,V01

Optional Accessories

Part Number	Description
840612031100	ADAPTER.12V.3.33A.40W,PAA040F,P
810618301010	CABLE.POWER.AC.1830mm USA type
810618301090	CABLE.POWER.AC,1830mm Europe type
810618301050	CABLE.POWER.AC.1830mm UK type
810618301170	CABLE.POWER,AC,1830mm Australia type
810618301030	CABLE.POWER.AC.1830mm Japan type