



DLF1568 / DLH1568

15" TFT LCD, LED Backlight 1600nits,XGA(1024x768)

15" TFT LCD panel, built-in 1600 nits high bright for sunlight readable LCD display, high transmittance color filter, high transmission polarizing plates, Low Power Consumption, suitable for kiosk, advertising, POS, marine, transportation, gaming, studio display, gas pump.

Key Features

- Sunlight Readable
- LED Backlight
- XGA(1024x768) High Definition
- High Shock & Vibration Resistance
- Low Power Consumption
- High Uniformity
- Low EMI Noise
- Wide Dimming
- Wide Operation temperature
- Life Expectancy



Specifications

V2

Model No.	DLF1568	DLH1568
Description	15" TFT LCD, LED Backlight 1600nits,XGA(1024x768)	
Display Area (mm)	304.13(H) x 228.1(V) mm	
Brightness	1600 cd/m ²	
Resolution	1024x768 (XGA)	
Contrast Ratio	700 : 1	
Pixel Pitch (mm)	0.297(H) x 0.297(V)	
Viewing Angle	+80°~-80°(H), +80°~-80°(V)	
Display Colors	16.7M	
Response Time (Typical)	8ms	
Power Consumption	15.6W	
Dimensions (mm)	326.5 x 253.5 x 12.5 (mm)	
Weight (Net)	1.0kg	
LED Driving Board	LID 15A03	
Control Board (Optional)	<input type="checkbox"/> AD5621GA <input type="checkbox"/> AD5621GD <input type="checkbox"/> AD5766GDVA <input type="checkbox"/> AD2662GDVAR	
<input type="checkbox"/> AD5621GA	VGA+Audio	
<input type="checkbox"/> AD5621GD	VGA+DVI	
<input type="checkbox"/> AD5766GDVA	VGA+CVBS+S-Video+Audio (Optional DVI / Component)	
<input type="checkbox"/> AD2662GDVAR	VGA+DVI (Optional S-Video/ Component / Audio)	
F / R Control Button	<input type="checkbox"/> 5 Key <input type="checkbox"/> 4 Key	
<input type="checkbox"/> 5 Key	Power Switch, Menu, Select (+,-), Auto	
<input type="checkbox"/> 4 Key	Power Switch, Menu, Select (+,-),	
OSD Menu	Brightness, Contrast, H/V Position, Color, Phase, Clock...	
Optional	<input type="checkbox"/> AOT <input type="checkbox"/> Touch Screen	

Specifications are subject to change without notice.

All brands or product names are trademarks or registered trademarks of their respective companies.

DLF= Panel+LED Driving Board

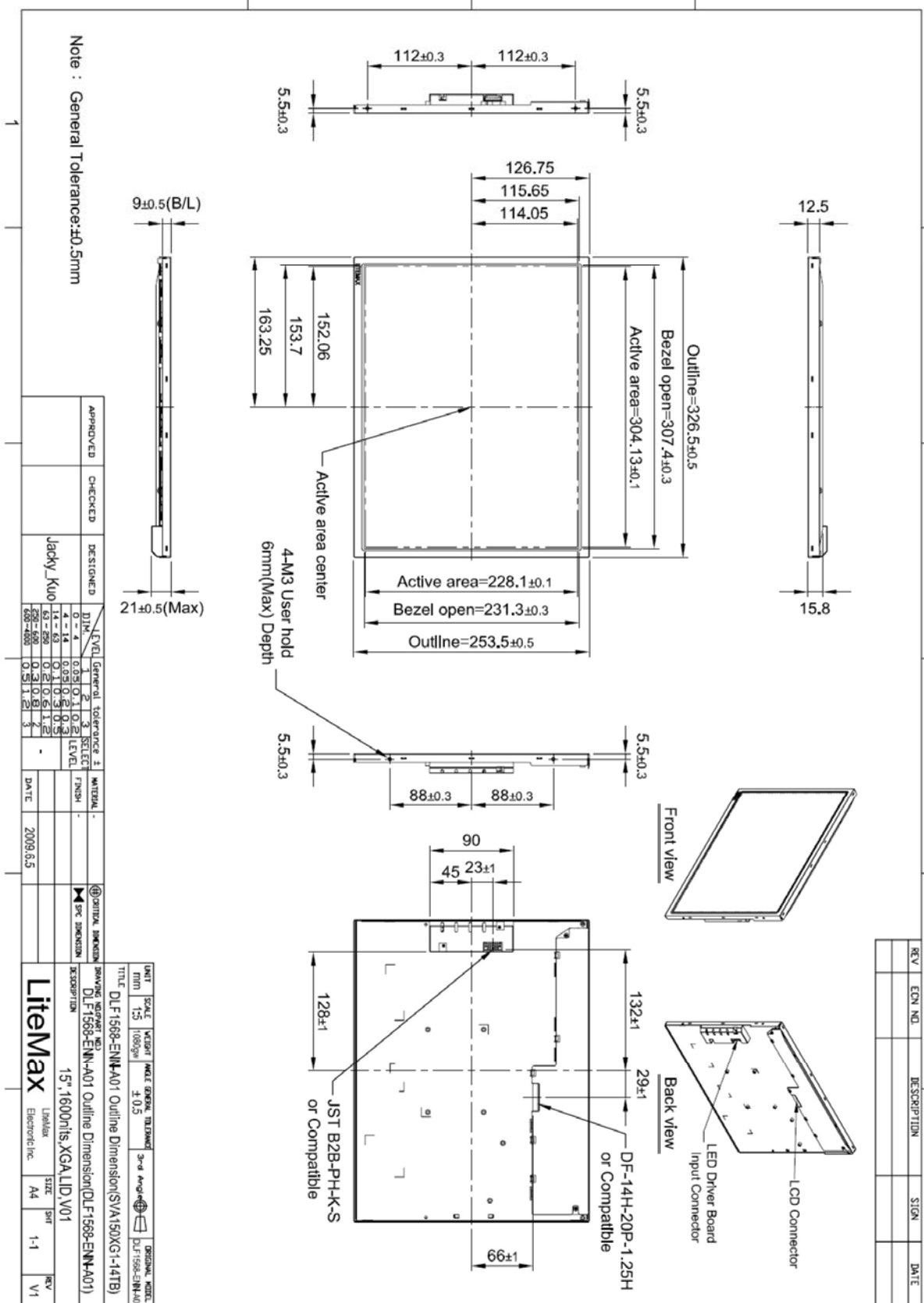
DLH= Panel+LED Driving Board+Control Board



Mechanical Drawing

Outline Dimensions

Unit:mm





Ordering Information

Part Number	Description
DLF1568-ENN-A01	15",1600nits,SXGA,LID17A02,V01
DLF1568-ENN-A01-01	15",1600nits,XGA,LID.5-in-1,carton,V01
DLH1568-ENN-G01	15",1600nits,SXGA,LID17A02,AD2662GD,V01
DLH1568-ENV-C01	15",1600nits,XGA,LID15.AD5766GDVA,5-key OSD keypad.VR,V01

Optional Accessories

Part Number	Description
840612051100	ADAPTER.12V.5A.60W.EA1050A,P
810618301010	CABLE.POWER.AC.1830mm USA type
810618301090	CABLE,POWER,AC,1830mm Europe type
810618301050	CABLE.POWER.AC.1830mm UK type
810618301170	CABLE.POWER,AC,1830mm Australia type
810618301030	CABLE.POWER.AC.1830mm Japan type