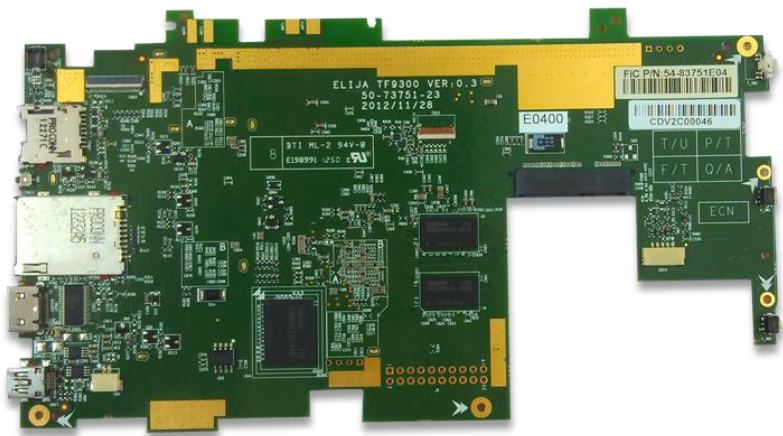


Front View



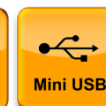
ARM Cortex™-A9 Motherboard

- Freescale i.MX6 Quad-Core 1.0 GHz high performance processor
- Supports Accelerometer and eCompass
- Dual Camera connectors
- LVDs, I2C, Mini USB(OTG) I/O interface
- WiFi 802.11b/g/n and Bluetooth support
- GPS/GLONASS support
- Supports Android, Linux, Java ,GreenHills

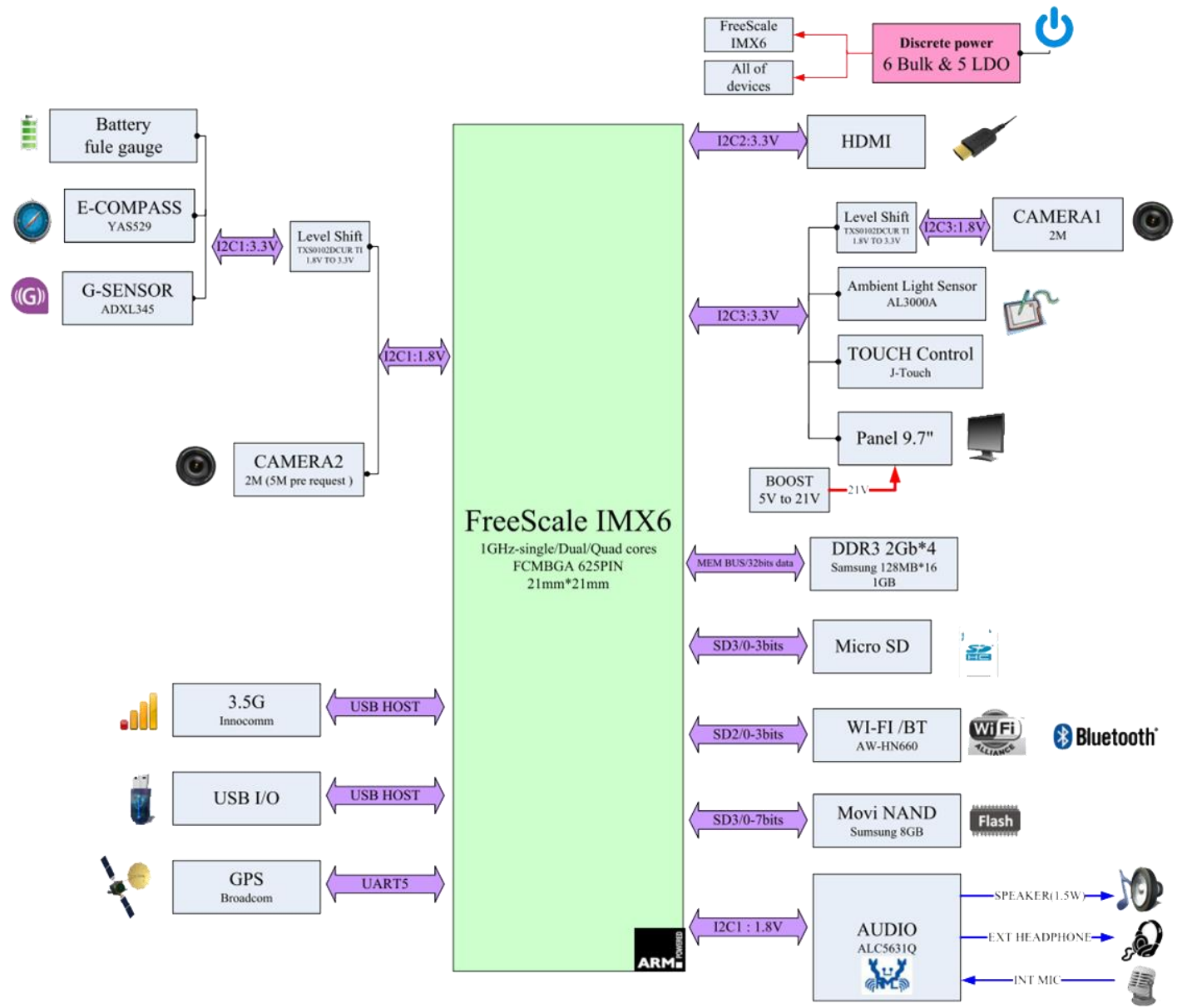
Rear View



Java



TF9300 Board Function Block Diagram



TF9300 Board Specification



Mobile Division

Processor		FSL i.MX6 Quad-Core 1.0Ghz
DRAM	DDR3	1GB DDR3 Samsung
External Memory	eMMC	16GB eMMC
	SD Card Socket	1 x micro SD card slot
Video	HDMI	1 x micro HDMI
	LVDS Connector	1 x LVDS
	Camera	2 x Paraller Camera connector
	Touch	1 x I2C connector for TPM
Audio	Audio Codec	Realtek ALC5631V
	Stereo input	1 x 3.5mm earphone Jack (daughter board)
	MIC input	N/A
	Microphones	1 x Microphone (wired)
	Speakers	1 x Speaker
	Volume Control	1 x Volume up/down button
Sensors	Accelerometer	ADI ADXL345
	eCompass	Yamaha YAS529
	Ambient Light	
Connectivity	USB OTG	1 x Mini USB Type A/B
	Ethernet	Via USB-to-Ethernet dongle
	Serial Debug	1 x Serial Debug 4 pin connector
	Wi-Fi/Bluetooth	802.11 b/g/n + Bluetooth on board
	Mini-Card	1 x Full size USB interface
	GPS	Broadcom BCM47511IFBG
	SIM	1 x SIM card slot
Power	Power Mgt	Power button
	Battery charging	Battery charger
	DC-in	via USB charging
	Power Supply	Output: 5V / 3A
Others		1 x Reset button

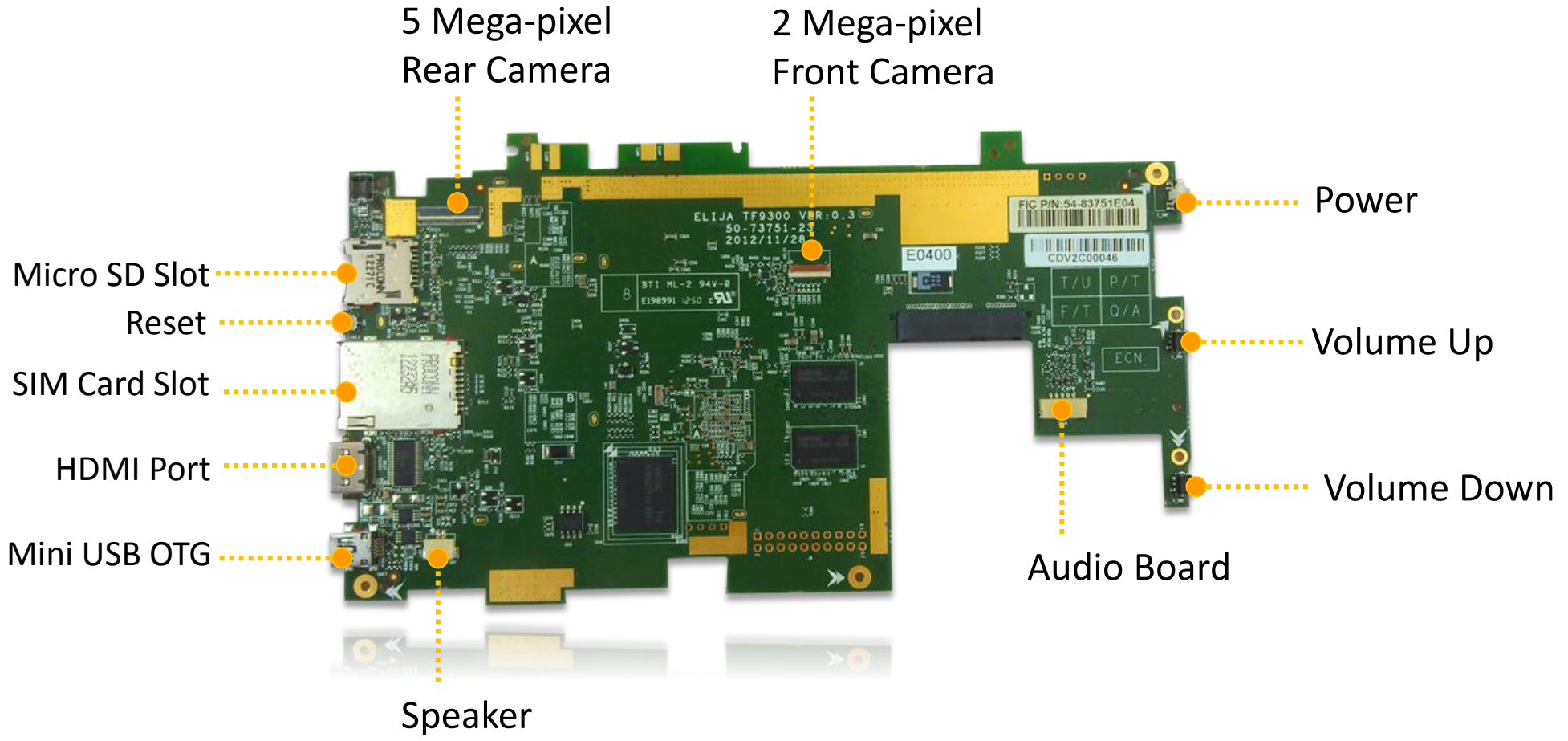
All other
owners.

TF9300 Board Dimensions

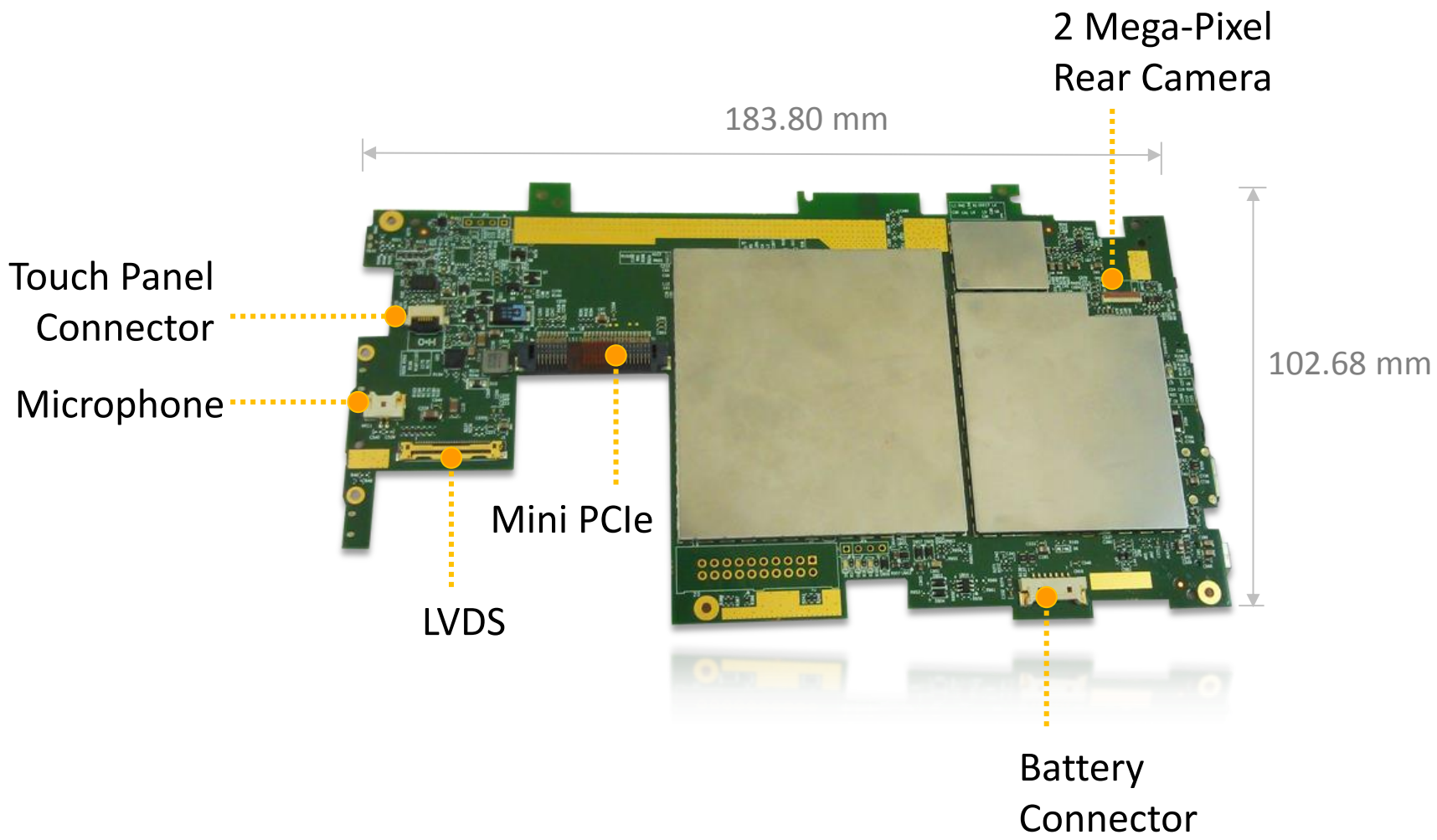


Mobile Division

Front View

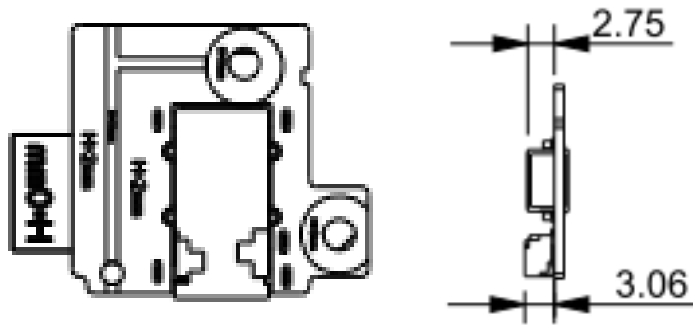


Rear View

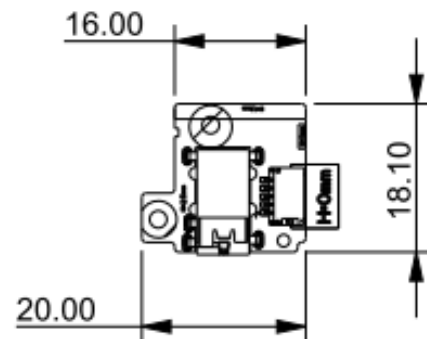
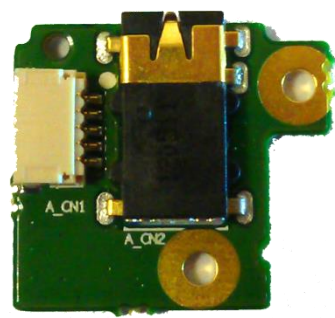


TF9300 Audio Jack Board Dimensions

Bottom Side



Top Side



Battery , Speaker, Touch, Front and Back Camera

CN18		
Pin	Define	Function
1	GND	Battery connector
2	GND	
3	BIN1	
4	BAT I2C1 SCL	
5	BAT I2C1 SDA	
6	V+	
7	V+	

CN7		
Pin	Define	Function
1	SPKOUTL_N_1	Internal Speaker jack
2	SPKOUTL_P_1	

CN8		
Pin	Define	Function
1	GND	Touch connector
2	Touch_INT	
3	Touch_RST_N	
4	I2C3_SCL	
5	I2C3_SDA	
6	DCDC_DEV_3V3	

CN12		
Pin	Define	Function
1	DGND	Front Camera(2M)
2	RESETB(Active LOW)	
3	PWDN(Active HIGH)	
4	DGND	
5	PCLK	
6	DGND	
7	XCLK	
8	DGND	
9	I2C_SCL	
10	I2C_SDA	
11	D7	
12	D6	
13	HSYNC	
14	VSYNC	
15	D0	
16	D1	
17	D5	
18	D4	
19	D3	
20	D2	
21	AGND	
22	AVDD(2.5V~3.1V)	
23	DOVDD(1.7~1.95V or 2.5~3.1V)	
24	DVDD(1.7V~1.95V)	
25	DGND	

CN16		
Pin	Define	Function
1	DGND	Back Camera(2M)
2	RESETB(Active LOW)	
3	PWDN(Active HIGH)	
4	DGND	
5	PCLK	
6	DGND	
7	XCLK	
8	DGND	
9	I2C_SCL	
10	I2C_SDA	
11	D7	
12	D6	
13	HSYNC	
14	VSYNC	
15	D0	
16	D1	
17	D5	
18	D4	
19	D3	
20	D2	
21	AGND	
22	AVDD(2.5V~3.1V)	
23	DOVDD(1.7~1.95V or 2.5~3.1V)	
24	DVDD(1.7V~1.95V)	
25	DGND	

TF9300 Board Function Pin Definition



Mobile Division

USB, MIC, Mini-PCIe, LVDS

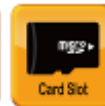
CN17		
Pin	Define	Function
1	CHG_IN	USB OTG connector
2	USB_5V	
3	CHG_IN	
4	D-	
5	CHG_IN	
6	D+	
7	GND	
8	USB_ID	
9	GND	
10	GND	

MIC1		
Pin	Define	Function
1	MIC1_N	MIC
2	MIC1_P	

CN9		
Pin	Define	Function
1	WAKE	Mini PCI-E
2	3G_3VIN(+3.3V)	
3	RSVD1(3G_PCM_DIN)	
4	GND7	
5	RSVD2(3G_PCM_DOUT)	
6	NA	
7	CLKREQ(3G_PCM_CLK)	
8	RSVD13(SIM PWR)	
9	GND1	
10	RSVD14(SIM DATA)	
11	NA	
12	RSVD15(SIM CLK)	
13	NA	
14	RSVD16(SIM RESET)	
15	GND2	
16	RSVD17(SIM VPP)	
17	NA	
18	GND8	
19	NA	
20	RSVD18(3G_EN)	
21	GND3	
22	PERST(MODEM_RESET)	
23	PER_N0(3G_PCM_SYNC)	
24	3.3V_AUX	
25	NA	
26	GND9	
27	GND4	
28	NA	
29	GND5	
30	SMB_CLK	

31	NA	Mini PCI-E
32	SMB_DATA	
33	NA	
34	GND10	
35	GND6	
36	USB_D-	
37	GND	
38	USB_D+	
39	RSVD6(3G_3VIN)	
40	GND11	
41	RSVD7(3G_3VIN)	
42	NA	
43	GND	
44	LED_WLAN	
45	NA	
46	LED_WPAN	
47	NA	
48	NA	
49	NA	
50	GND12	
51	NA	
52	3.3V_2	

J1		
Pin	Define	Function
1	NA	LVDS connector
2	LCD_19V6	
3	LCD_19V5	
4	LCD_19V4	
5	LCD_19V3	
6	LCD_19V2	
7	LCD_19V1	
8	NA	
9	LCD_19V	
10	LCD_19V	
11	NA	
12	GND	
13	LVDS_TX0_N_1	
14	LVDS_TX0_P_1	
15	GND	
16	LVDS_TX1_P_1	
17	LVDS_TX1_N_1	
18	GND	
19	LVDS_TX2_P_1	
20	LVDS_TX2_N_1	
21	GND	
22	LVDS_CLK_P_1	
23	LVDS_CLK_N_1	
24	I2C3_SDA	
25	I2C3_SCL	
26	GSP	
27	VLCD_3V3	
28	VLCD_3V3	
29	VLCD_3V3	
30	GND	



9.7-inch Quad-Core Tablet

- Equipped with a brilliant 9.7-inch IPS panel for ultra wide degree viewing angle
- Full 1080p video playback
- Various network connectivity including 3.5G or 4G LTE for option
- Supporting USB OTG (On-The-Go) function

Key Specification

Operating System	• Android™ 4.0.4
CPU	• Freescale™ i.MX6 Quad-Core, 1.0GHz • ARM Cortex™-A9 core architecture
Storage	• 16GB e.MMC NAND Flash
System Memory	• DDR3, up to 1GB
Display	• 9.7-inch, IPS panel • 1024x768 resolution • Capacitive 10 points multi-touch screen
Interface	• Mini USB, mini HDMI, micro-SD slot, volume control, earphone jack, SIM card slot
Wireless	• 3.5G and 4G LTE Compliance (Available for operator partners only) • Wi-Fi 802.11b/g/n • Bluetooth® 4.0 (Classic mode)
Camera	• 2.0MP camera (Front) and 2.0MP camera (Rear)
Power Supply	• Polymer battery 6400mAh • 5V 3A WM type adaptor
Dimensions	• 244.8 x 191.7 x 12.5 mm (WxDxH)
Weight	• Approx. ~685g (excluding 3.5G module)
Others	• Sensors: G-sensor, E-compass • GPS receiver