

SCMS1548R2 - 15.6" Smart CMS (Commercial Multimedia Service) System Digital Signage/ Kiosk/ ePOS/ Panel Computing

- **Commercial multi-functional service system**
All-in-One design to fulfill various applications
can be applied to applications like digital signage, kiosk, ePOS, panel computing, integrated with Barcode scanner, NFC, HID, MSR, or external SCR and Thermal Printer
- **Enhanced Content Management & Central CPE Management features enabled**
- **Full function CMS system with Quad-Core Cortex-A17 CPU up to 1.8GHz**
WiFi, Bluetooth embedded, and optional external WAN module supported
- **Reliable Digital Signage and Kiosk for small-middle scenario with P.Cap touch**
Store, super market, department store, museum, meeting room, public area,
- **ePOS for small store with Barcode scanner, MSR, NFC and/or Thermal printer**
Integrated MSR, NFC or Barcode scanner, plus external thermal printer for club, lounge, temporary store
- **Commercial Panel Computing for auto-control**
Meeting room, demo room, security applications, access control, surveillance system.....



Feature - enhanced Signage management

■ CMSWatch* (remote SCMS devices management)

CMSWatch monitors the status of Smart CMS devices (Smart Commercial Multimedia Service/System) and manages its configuration. It does not provide CMS features, such as playlist management, scheduling, screen layout, and content creation.

CMSWatch can do -

- | | |
|---------------------|--|
| Device intelligence | - predictive maintenance |
| Player management | - Heart beat / Screenshot
Troubleshooting / Configuration |
| Technical support | - most of time spent in collecting device activities logs |

CMSWatch key features -

- User-intuitive interface for player status management
- watch what is playing on the remote players
- Remotely configure SCMS or update firmware

■ CMSExpress* (local SCMS devices content management)

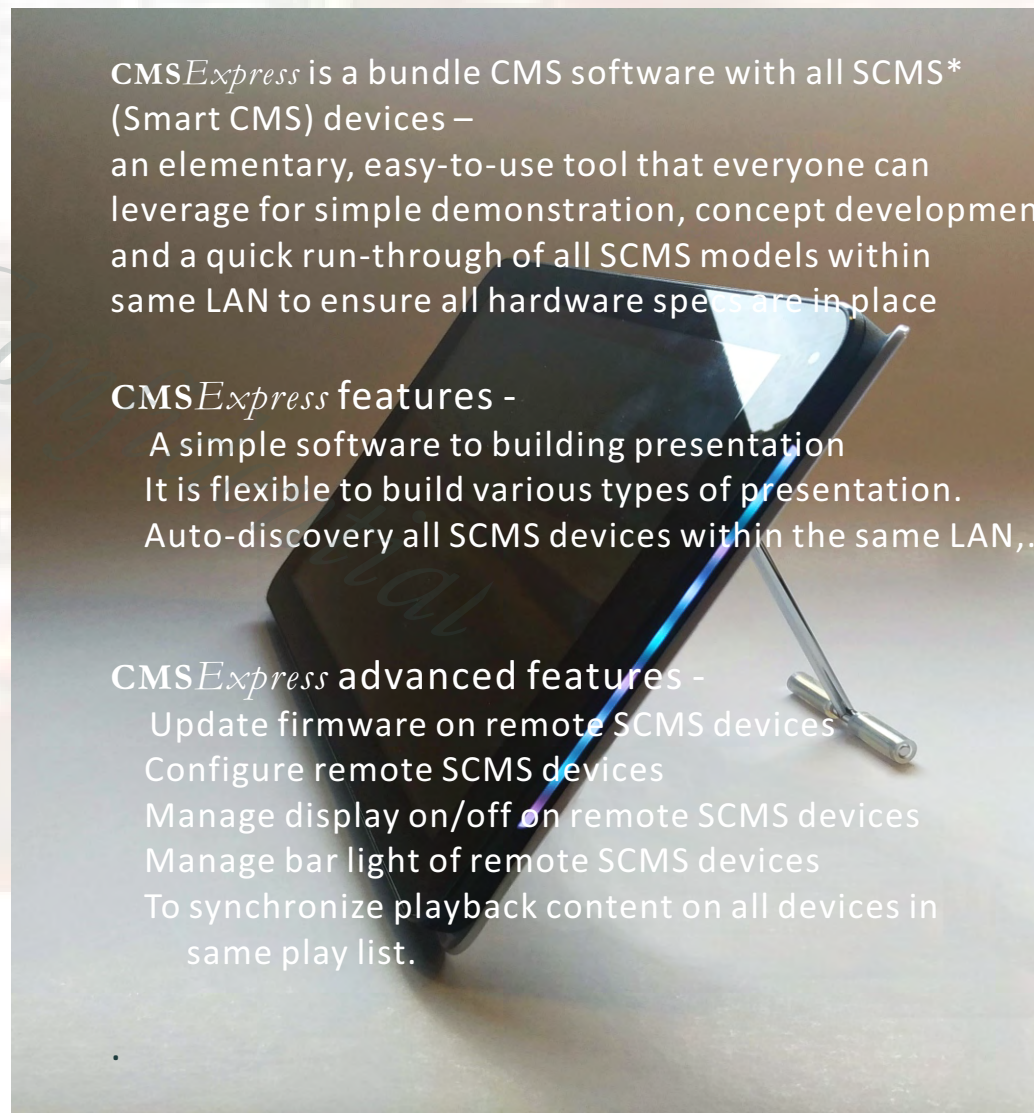
CMSExpress is a bundle CMS software with all SCMS* (Smart CMS) devices – an elementary, easy-to-use tool that everyone can leverage for simple demonstration, concept development and a quick run-through of all SCMS models within same LAN to ensure all hardware specs are in place

CMSExpress features -

- A simple software to building presentation
- It is flexible to build various types of presentation.
- Auto-discovery all SCMS devices within the same LAN,.

CMSExpress advanced features -

- Update firmware on remote SCMS devices
- Configure remote SCMS devices
- Manage display on/off on remote SCMS devices
- Manage bar light of remote SCMS devices
- To synchronize playback content on all devices in same play list.

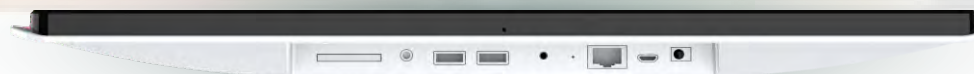


Specification I

ITEM	DETAILED		
System			
SOC	RK3288, Quad Core Cortex-A17 CPU; up to 1.8GHz ARM Mali-T764 GPU, up to 600MHz 4K H.264 and 10bits H.265 video decode, 1080P multi video decode		/ Support OpenGL ES1.1/2.0/3.0, Open VG1.1, OpenCL, DirectX11 / 1080P video encoding for H.264 and VP8, MVC
OS	Android 7.1		
Display	15.6" (16:9) FHD 1920* 1080 TFT LCD display Programable LED light bar * 2	Brightness : 300 nits / Right & Left side on device	/ 10 points Projected Capacitive Touch Screen / generat various light color
Memory	2GB DDR3 (1GB optional, TBD)	/ 8GB eMMC (16/32GB option, TBD)	/ SD Card slot (standard, up to 64GB)
Multimedia	Video decode	/ H.264/AVC, H.265/AVC, MPEG-4/2/1, VC-1 up to 1080P	
	encode	/ 1080P H.264 and VP8	
	Audio	/ MP1,2,3, WMA, WAV, APE, OGG, FLAC, AAC/ MP3 up to 320 kbps	
Picture	/ JPG, PNG up to 1080P		
Connectivity			
WWAN	External 4G USB dongle (optional)	/ via external USB module	
WiFi / Bluetooth	WiFi 802.11 b/g/n	/ BT4.0	
LAN	RJ45 Ethernet, 10/100 Mbps LAN	/ POE (optional)	
Advanced Signage Features			
Remote devices & content Management	Remote commissioning AlwaysOn, AppLock to prevent unauthorized access StrongCache for continuous playback even when network is not available		(optional license)
Signage Content and device management	CMS express Applications 3rd parties CMS solution		(optional license)
Peripherals			
Camera	Front: 2.0 MP camera	(customized optional, to be discussed)	
Audio	Embedded speaker 8Ω / 2W* 2 \ Amplifier : 2.1W+2.1W	/ 3.5mm Headset + MIC jack* 1	
Sensor	G Sensor		
Other H/W	Vesa mount : Metal-fittings mounting screw hole places		
Functional keys	Power button		
	2D/1D barcode reader	(customized optional, to be discussed)	
Optional Module	NFC module	(optional)	
	HID module	(optional)	
	MSR Reader	(To be discussed about requirement)	
	External (BT/ USB) thermal printer	(To be discussed about requirement)	
	External (BT/ USB) Smart Card Reader	(To be discussed about requirement)	

Specification II

ITEM	DETAILED		
I/O Ports			
USB Port	* 2, USB 2.0 host, type A female connector * 1, Micro USB 2.0 female connector		/ Support up to 64GB U-Disk
SD card Slot	* 1, SD slot (SDHC class 10 compatible)		
DC-In	* 1, 3.5mm DC-In jack, 12V/ 2A		
Power System			
DC-Input:	DC 12V +/- 5%, 2A Max.		
LED Indicator	* 2, LED light bar on right & left front pane	/ RGB to support various default color and customized color	
Mechanical & Environmental			
Dimension / Wight	402* 253* 30 mm (15.82" x 9.96" x 1.19") / Weight : 1320g (2.917 lb)		/ Material : PC + ABS plastic
Operating Temp.	-0°C ~ 40°C (32°F ~ 104°F)		
Storage Temp.	-20°C ~ 60°C (-4°F ~ 140°F)		
Operating Humidity	10% ~ 85% (40°C)		
Mounting Solutions	1) Vesa Mounting : Metal fitting Mount Screw holes: 75* 75 mm 2) Stand mount 3) Shelf mount 4) Wall mount		
Regulation Compliance	FCC certified	/ CE certified	/ ROHS complied
Default Accessory	AC 100~240Vac, 50~60Hz; DC 12V/2A, AC/DC Adapter & power cord (170g +/- 5g if with US type)		/ Brown box
Packaging	1PCS packaging box :	Dimension: 493* 303* 70mm	/ Weight: 2,000g +/- 10g (box + device + power adpater & cord)
	5PCS packaging box	Dimension:	/ Weight: (5 sets contained)



Physical Specification

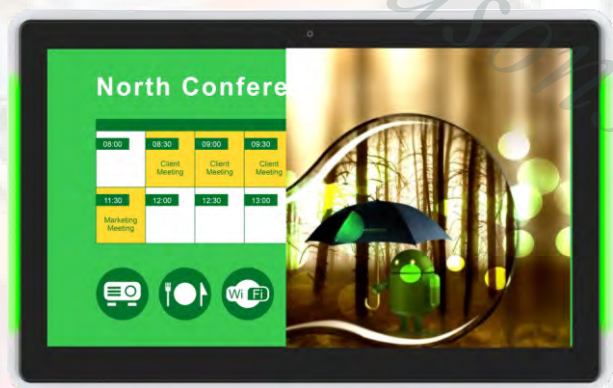
Top -



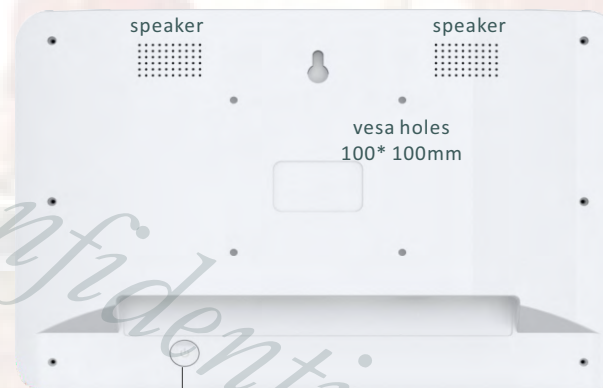
Left -



Front -



Rear -



Right -



Bottom -



- Micro SD slot
- Audio Jack
- USB port* 2
- DC-In
- Micro USB
- RJ45-ethernet
- Reset
- Flush mount bracket screw

Applications - CMS, ePOS, CPC



to be discussed



to be discussed



to be discussed

Application Concept I - Hospitality/Restaurant & ePOS



Preview menu in restaurant



ePOS



Self-ordering in restaurant

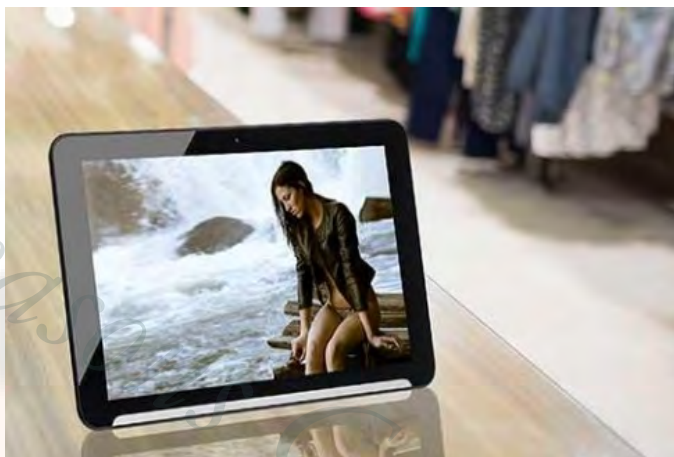


Entertainment/ Advertisement
Menu & Ordering in bar

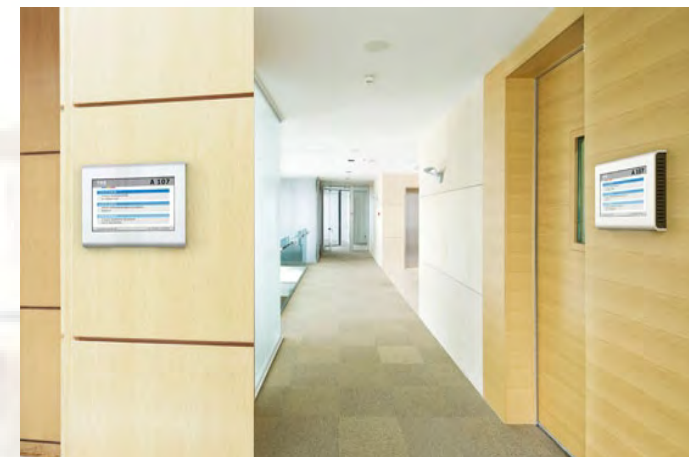
Application Concept II - Digital Signage



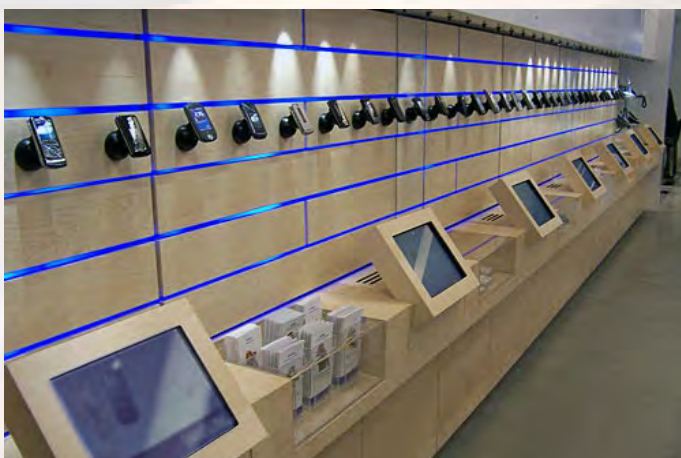
In bus/train Digital Signage



In-Store marketing in fashion store



Digital Signage in Conf room



In-Store Digital Signage for product information



SCMS Family



Retailed-Store Digital Signage

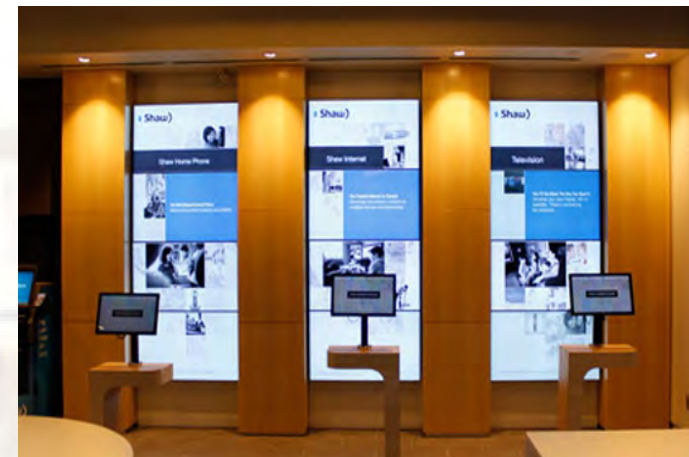
Application Concept III - Digital Kiosk



Exhibition Registration/ Internet kiosk



Kiosk Listing



Remote Kiosk/ Signage



Electronic Kiosk in Information Station



SCMS Family

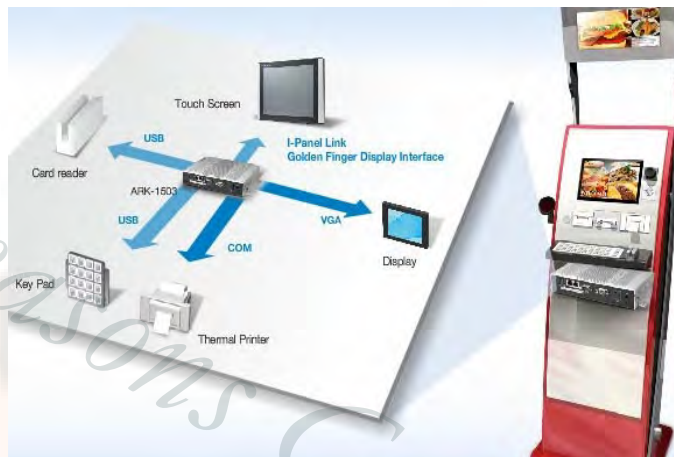


In-Store marketing at touch display

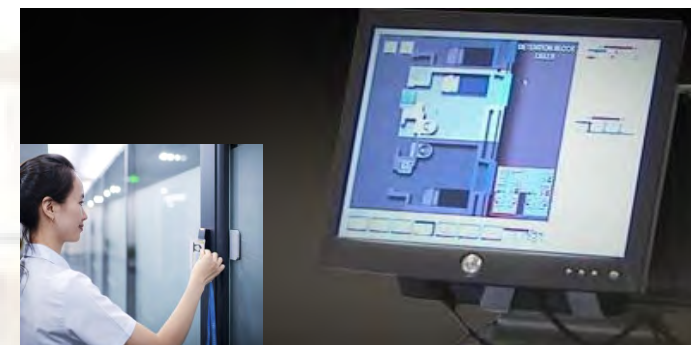
Application Concept IV - Panel Computing



Commercial Controller



Kiosk Controller



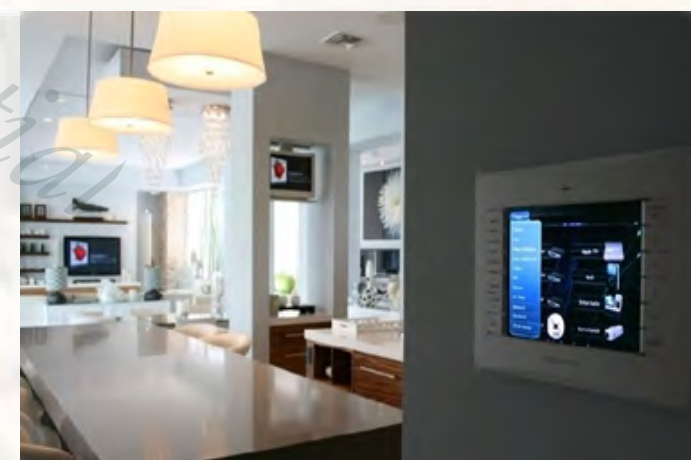
Building Automation & Security



In-Station e-Ticketing



Touch & Control your Digital Life



Smart Home & Surveillance