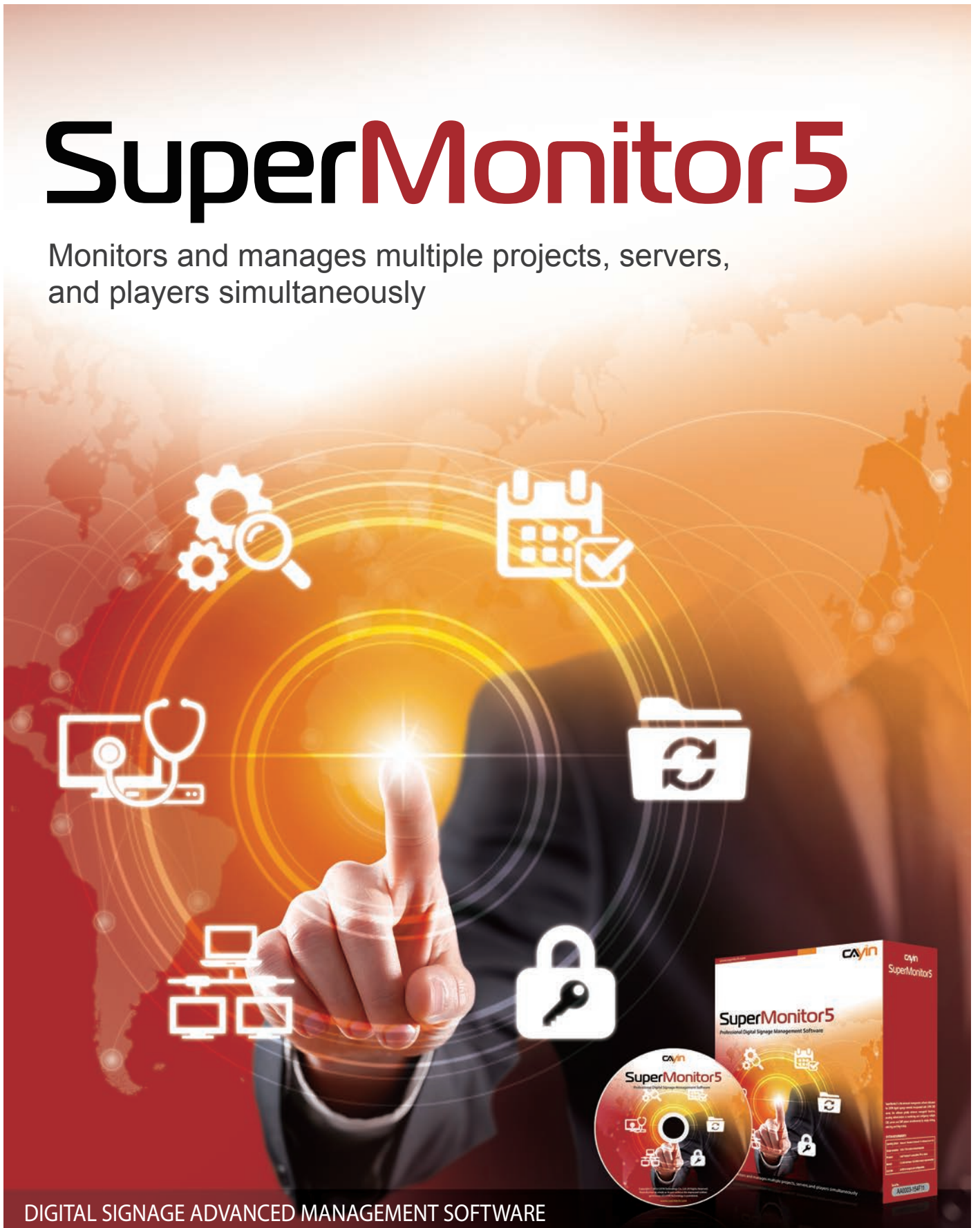


SuperMonitor5

Monitors and manages multiple projects, servers,
and players simultaneously



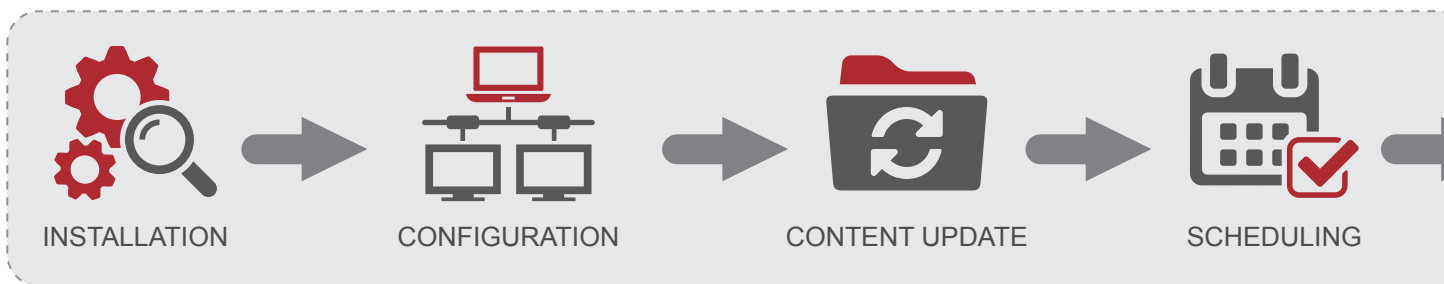
DIGITAL SIGNAGE ADVANCED MANAGEMENT SOFTWARE

SuperMonitor5 is the advanced management software dedicated for CAYIN digital signage network. Incorporated with CAYIN CMS server, the software greatly enhances managerial functions, assisting administrators in monitoring and configuring multiple CMS servers and SMP players simultaneously by simply clicking, selecting, and drag-n-drop.



Comprehensive Monitoring Solution

From Installation to Daily Operation



INSTALLATION

Monitor Player Installation Progress

Administrators can import a player list (text file) into the unregistered folder in advance. Each player will be automatically moved to its predefined folder after it gets online and registers to the CMS server.



CONFIGURATION

Perform Time-Saving Batch Configuration

Configurations, such as multimedia playback, local schedule and system settings, can be synchronized between the benchmark player and all the other selected players in the same group.



CONTENT UPDATE

Monitor Content Update Process

Administrators can watch the percentage of the download process and ensure successful content synchronization. Historical records of content update can also be tracked on SuperMonitor5, so that administrators can watch over the status at any time.



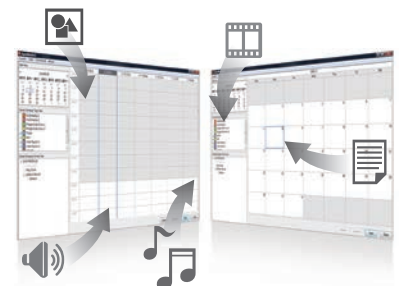
SCHEDULING

Schedule Playlists Centrally with Calendar View

SuperMonitor5 provides an alternative calendar view to schedule the following multimedia playback:

- **SMP-PRO series:** video, music, image, ticker, skin, and volume independently
- **SMP-WEB series:** playlist made up of items: webpage, Flash, image, video, program, volume All schedules and playlists configured in SuperMonitor5 will be synchronized to CMS servers automatically and then apply to SMP players in groups.

* The version of CMS 9.0 or later is not supported



PLAYBACK

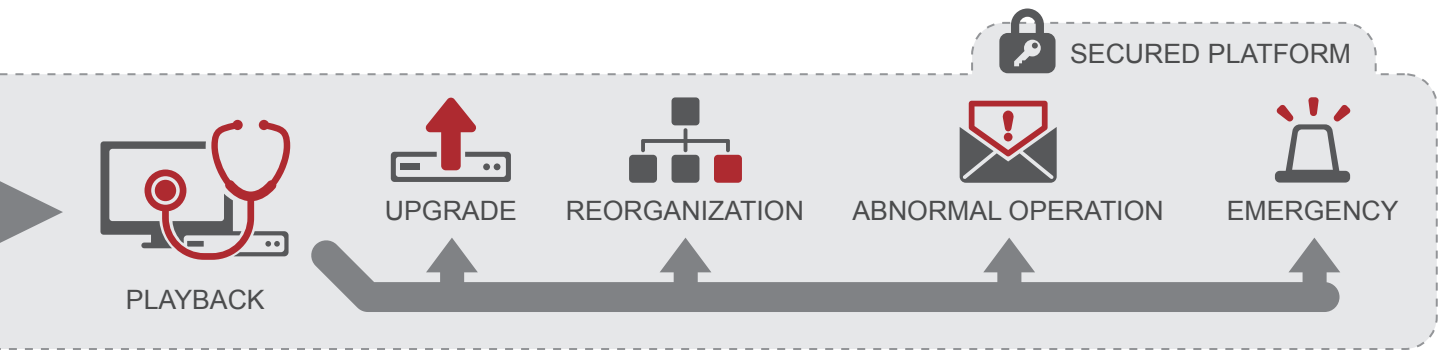
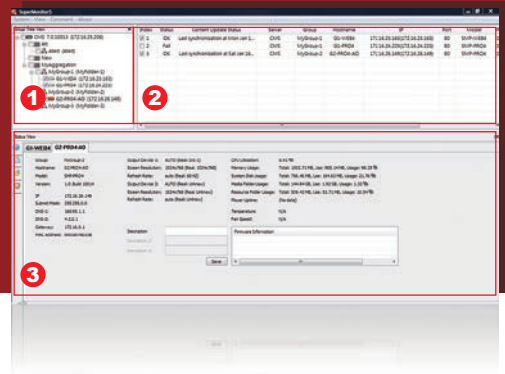
Monitor Live Status of Multimedia Playback

Administrators can check the current playlist, multimedia files, and even the actual preview of the screen, receiving instant updates of each SMP player.

User Interface Introduction

The user interface of SuperMonitor5 is composed of three major windows:

- 1 Group Tree View:** Displays CMS servers, groups, and SMP players in a clear hierarchical menu.
- 2 Player View:** Displays the connection status and basic system information about selected SMP players in a table.
- 3 Status View:** Displays detailed information about selected SMP players in a tab menu.



UPGRADE

Update and Manage Patch Efficiently

SuperMonitor5 assists users in listing available patches, filtering suitable SMP players for each patch, and simplifying the maintenance of large-scale digital signage networks.



REORGANIZATION

Regroup Players with Great Flexibility

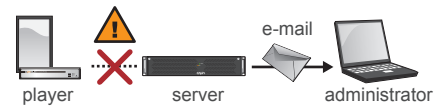
With SuperMonitor5, administrators can easily move SMP players to a different group or a different CMS server by simple drag-n-drop. In addition, hostnames of SMP players or CMS servers in SuperMonitor5 can be changed without entering the web-based management interface one by one.



ABNORMAL OPERATION

Provide Instant Alert Mechanism

The system will indicate those abnormal devices whenever any disconnection between a SMP player and a CMS server is detected. SuperMonitor5 can even send an alert notification by Email to multiple users immediately or upon a pre-set schedule.



EMERGENCY

Trigger Emergency Events

Administrators can trigger emergency events through SuperMonitor5, so that those enabled players will broadcast the pre-configured emergency contents to the public.



SECURED PLATFORM

Enhance Security with Data Encryption

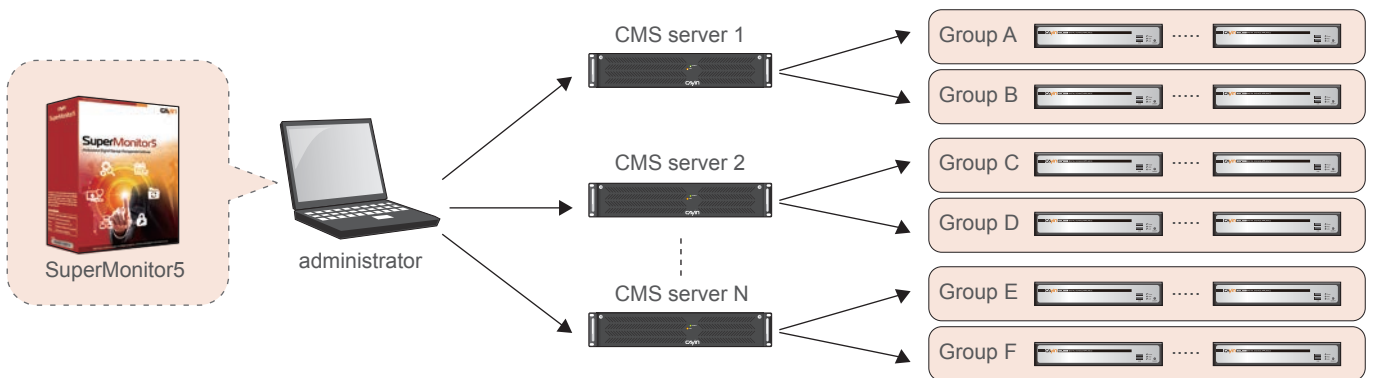
SuperMonitor5 adopts advanced encryption and authentication methods to secure data transmission. Users can configure their own golden key to ensure the integrity of data.

Integration with SuperReporter2



The player profile in SuperMonitor5 can be imported into SuperReporter2, so that the same database can be shared. SuperReporter2, the Windows®-based package software, helps administrators to generate playback and system status reports and diagrams.

System Structure



System Requirements

Operating System	Windows® 7, Windows® 8, Windows® 10 and Windows Server® 2012
Display Resolution	1024 x 768 or above is recommended
Processor	Intel® Pentium® 4 compatible CPU or above
Memory	1024 MB minimum. 2048 MB or more is recommended
Hard Disk	200 MB for program and configurations

- * Features and specifications are subject to change without notice.
- * All brand names and trade marks are the property of their respective owners.
- * Software will be delivered via online download.

CAYIN CAYIN Technology Co., Ltd.
 8F-2, No. 577, Linsen N. Rd., Taipei City 104, Taiwan
 TEL: +886-2-25951005 FAX: +886-2-25951050
 sales@cayintech.com www.cayintech.com

CAYIN Technology
 CAYIN Technology
 @CayintechPress